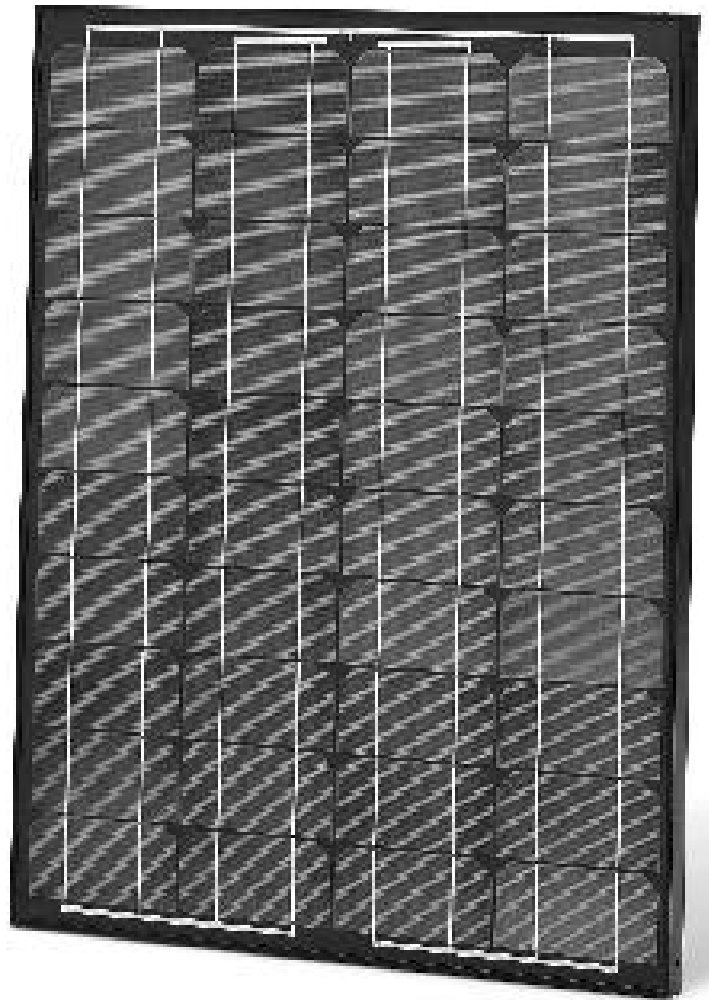


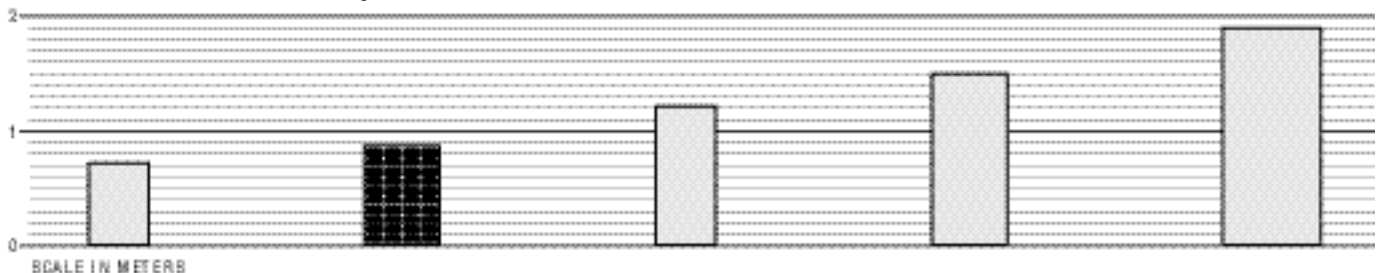
# AP-50 PHOTOVOLTAIC MODULE

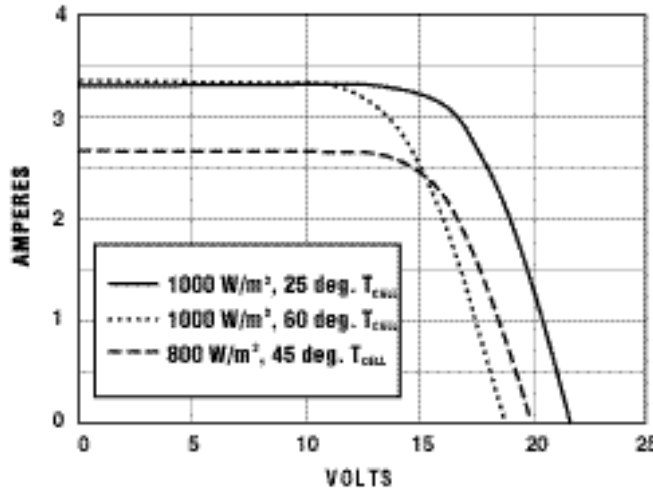
- Over 3.0 amps of battery-charging current in full sunlight.
- Designed specifically for low capacity 12-48 volt DC systems.
- Ideal for solar home systems.
- Weather resistant junction box for easy and safe field installation.
- Dual low-loss bypass diodes for superior protection and minimum power loss when partially shaded.
- 100% factory inspected to ensure quality and electrical performance.
- Heavy duty anodized aluminum frame provides strength and convenient mounting access.
- Certified to IEC-61215, the highest industry standard.
- UL Listed.
- 20 year warranty.



*The AP-50 is designed specifically to address the growing worldwide demand for 50-watt solar home systems. Producing over 3 amps of battery charging current under full sunlight, this module employs a blue backsheet and black frame for optimum aesthetics when roof-mounted.*

AstroPower Module Product Range





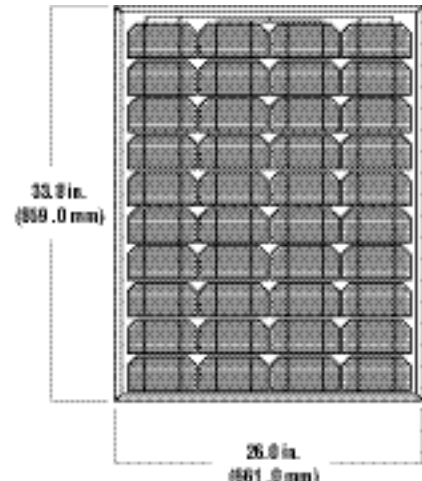
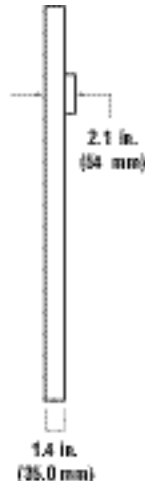
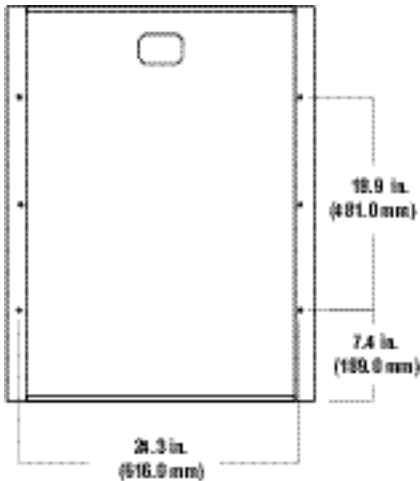
**TYPICAL ELECTRICAL PARAMETERS**

Peak Power $(W_p)$	Watts	50
Open Circuit Voltage $(V_{oc})$	Volts	21.5
Max. Power Voltage $(V_{mp})$	Volts	16.7
Short Circuit Current $(I_{sc})$	Amps	3.3
Max. Power Current $(I_{mp})$	Amps	3.0
Short Circuit Temp. Coefficient	mA/°C	+0.9
Open Circuit Voltage Coefficient	V/°C	-0.10
Max. Series Fuse	Amps	5

Standard Test Conditions (defined as: Irradiance = 1000 W/m<sup>2</sup>; cell temperature = 25°C; solar spectral irradiance per ASTM E892, \*rated power tolerance ±10%

**TYPICAL OPERATIONAL SPECIFICATIONS**

Nominal Operating Cell Temp. (NOCT)	45°C (Determined under: Irradiance = 800 W/m <sup>2</sup> ; ambient temperature = 20°C; wind speed = 1m/s)
Weight (Wind) Bearing Potential	50 lbs/ft <sup>2</sup> (125 mph equiv.)
Hailstone Impact Resistance	1" @ 50 mph (24 mm @ 80 kph)
Weight	16.6 lbs. (7.5 kg)
Dimensions	26.0 x 33.8 x 1.4 in. (660.0 x 858.0 x 35.0 mm)



Note: Mounting hole diameter is .26" (6.6 mm).



**ASTROPOWER**  
ASTROPOWER